

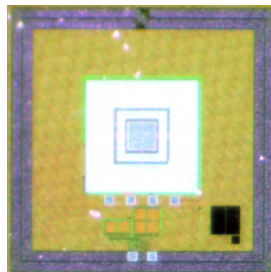
Manuel Monge

manuel.monge@usc.edu
<https://imedelab.org>

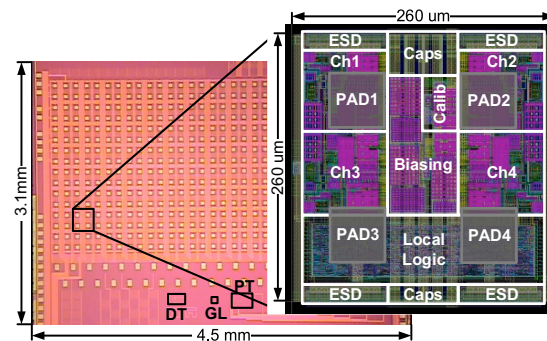
- Assistant Professor, Electrical and Computer Engineering
- Ph.D. and M.S. in EE from Caltech (2017, 2010),
B.S. in EE from Pontifical Catholic University of Peru (2008)
- Rosen Scholar, Rosen Bioengineering Center, Caltech (2014)
- Demetriades-Tsafka-Kokkalis Prize in Biotechnology, EAS, Caltech (2017)
- Charles and Ellen Wilts Prize, EE, Caltech (2017)

Research interest:

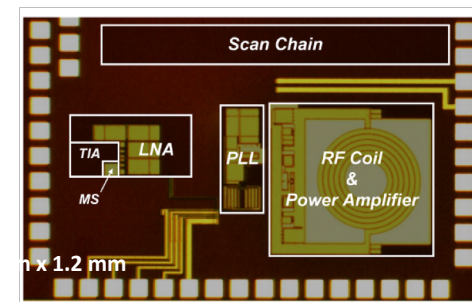
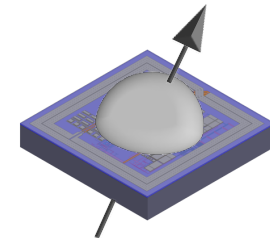
- Analog, mixed-signal, and low-power integrated circuits
- Integrated circuits for medical electronics
- Miniature medical devices
- Neural Interfaces



**Fully Implantable
Amperometric Biosensor**



**512-Channel Fully Intraocular High-Density
Self-Calibrating Epiretinal Prosthesis**



**MRI-inspired microchip for localization
of miniature devices inside the body**

